



GLOBAL EDUCATION PROGRAM

RUSSIAN FEDERATION GOVERNMENT-SPONSORED PROGRAM
THAT OFFERS RUSSIAN CITIZENS AN OPPORTUNITY TO STUDY
AT LEADING FOREIGN UNIVERSITIES



REGULATIONS:

- The Russian Federation President Decree № 967, of December 28, 2013 «On measures to strengthen the human resource potential of the Russian Federation»
- The Russian Federation Government Decrees № 568, of June 20, 2014 <http://government.ru/docs/13277>, №635, of June 26, 2015
- The Russian Federation Government Decree № 1101-p of June 15, 2015 <http://government.ru/docs/18567>



PROGRAM DURATION: 3 years (2014-2016)



Program is realized according to the Government Decree #568 dated 20 June, 2014 under the order of the Ministry of Education and Science of the Russian Federation.



Program Operator is the Moscow School of Management SKOLKOVO.

PROGRAM HIGHLIGHTS



3
LEVELS
OF STUDY

- Master's
- PhD
- Residency



5
STUDY
AREAS

- Science
- Engineering
- Medicine
- Education
- Management in Social Sphere



32
SPECIALIZATIONS



32
COUNTRIES



288
LEADING
UNIVERSITIES



550
RUSSIAN
EMPLOYING
ORGANIZATIONS

GRANT

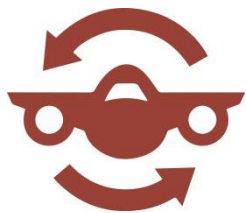


Limit for each participant –
up to 2,76 mln Russian rubles/ year



Tuition fees

Other costs:



Travel expenses



Accommodation



Medical
insurance



Meals

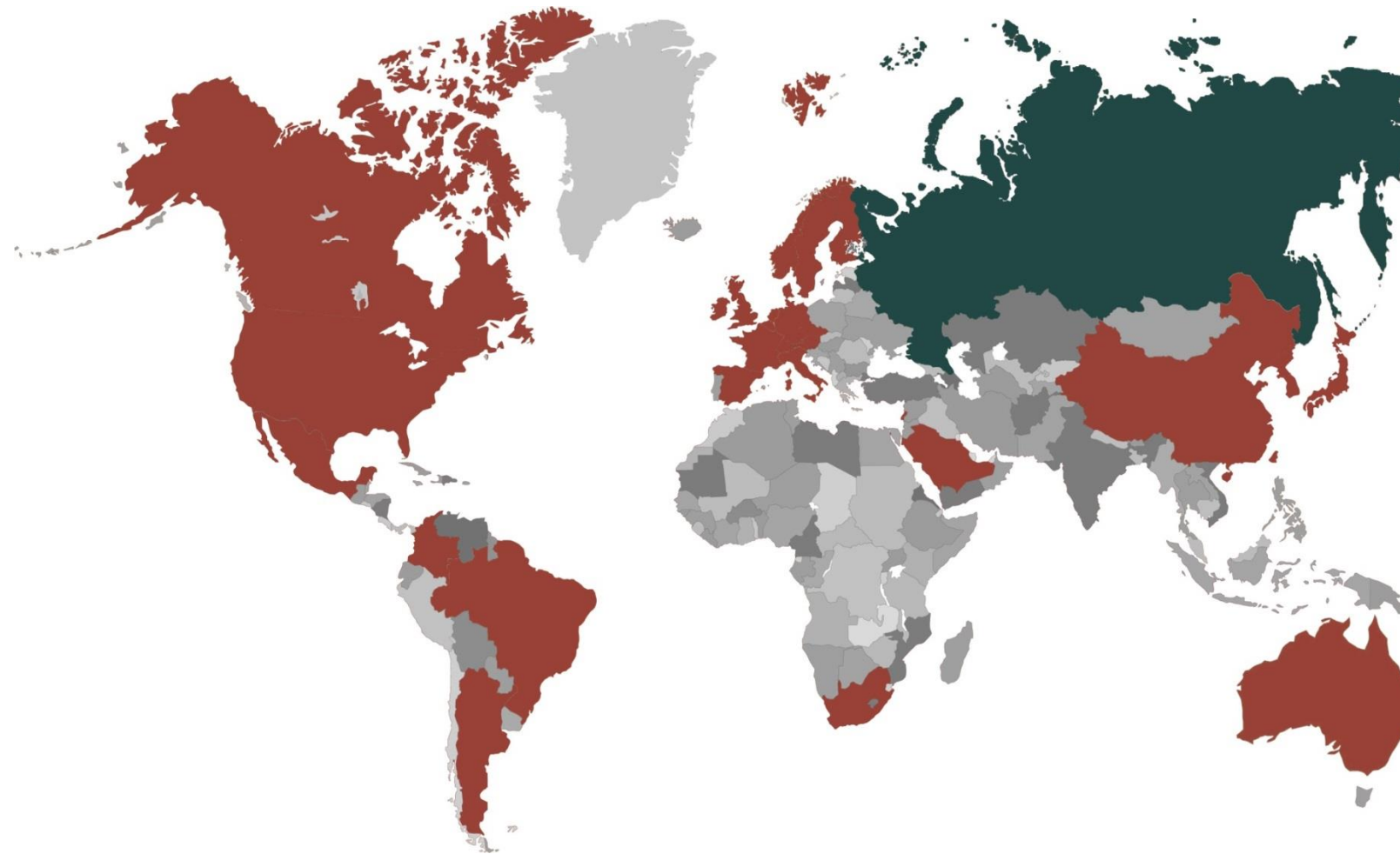


Academic
literature

COUNTRIES

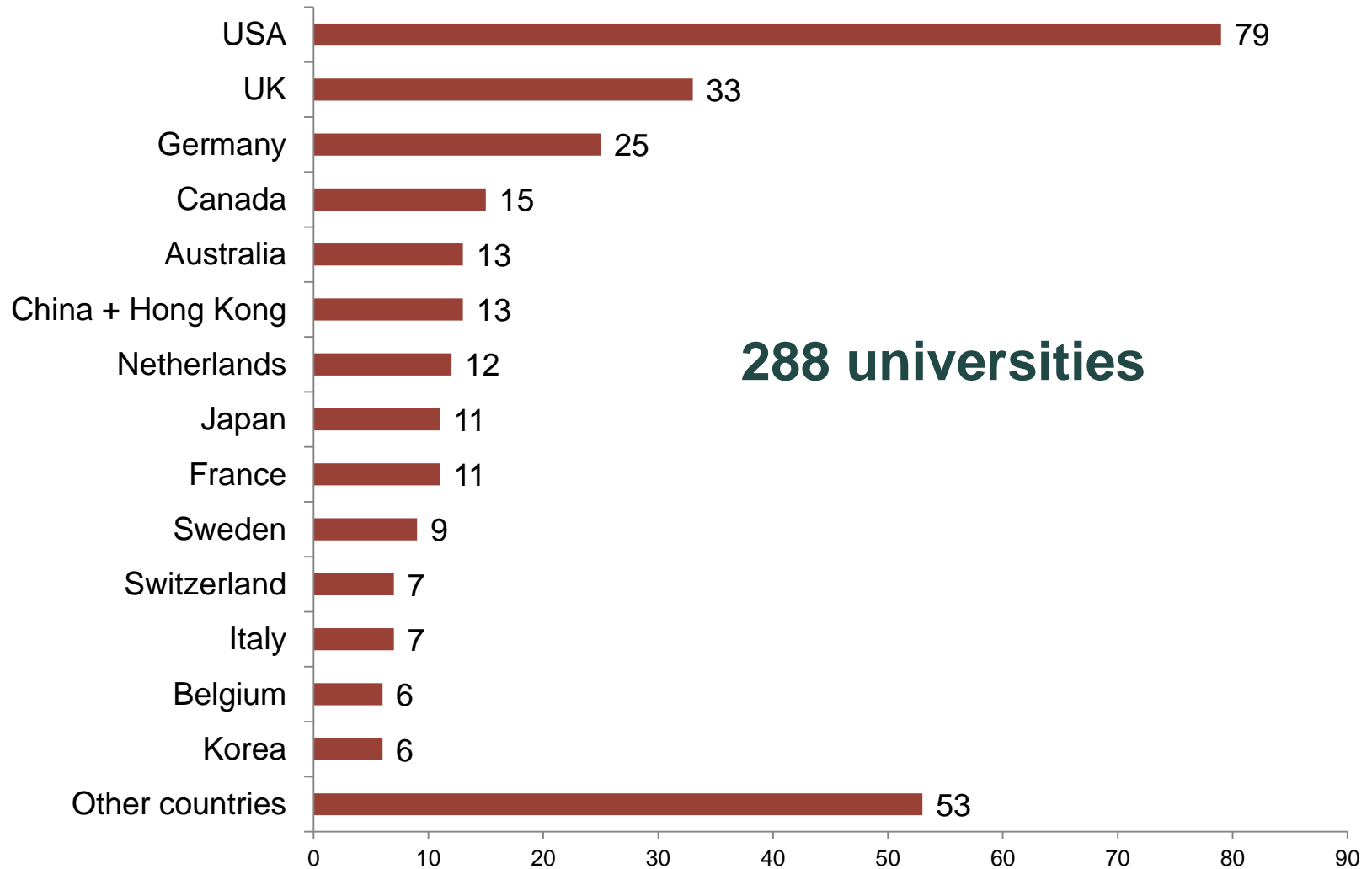


32 countries



- Argentina
- Australia
- Austria
- Belgium
- Brazil
- Columbia
- UK
- Germany
- Hong Kong
- Denmark
- Israel
- Ireland
- Spain
- Italy
- Canada
- China
- Korea
- Netherlands
- New Zealand
- Norway
- Mexico
- Czech Republic
- Singapore
- USA
- Taiwan
- Finland
- France
- Switzerland
- Sweden
- South Africa
- Japan
- South Arabia

UNIVERSITIES



STUDY LEVELS



Master's

PhD

Residency

* Internships, MBA and joint programs (between Russian university and a foreign one) are not funded.

STUDY AREAS AND EDUCATIONAL PROGRAMS



Science

- Biological Sciences, Physics & Astronomy, Mathematics, Chemistry, Computer Science, Environmental Sciences, Earth & Marine Sciences, Materials Sciences, etc.

Engineering

- Biomedical Engineering, Chemical Engineering, Civil Engineering, Electrical & Electronic Engineering, Information and Computer Engineering, Power and Energy Engineering, Mechanical Engineering, Aerospace Engineering, etc.

Education

- Education Administration, School and University Management, Education Policy, Educational Psychology, Special Education, International and Comparative Education, Curriculum Development and Instruction, etc.

Medicine

- Medical Sciences, Clinical Medicine, Pharmaceutical Sciences, Public Health, Health Care Sciences and Services, Nursing, etc.

Management in Social Sphere

- Social Sector Management, Health Sector Management, Public Administration, Public Affairs, Public Policy, Social Work, Social Welfare, Social Policy, Migration Studies, Labor Economics

ELIGIBILITY CRITERIA



Russian
citizenship



Bachelor's or
Specialist diploma



Certificate of enrollment to Master's, PhD or
residency programs







Compliance with Program terms and conditions
(including the employment in Russian companies
upon completion of studies)

PARTICIPATION STEPS



SELECTION



	CRITERIA	VALUE
	Number in online registration system	1
	Professional experience	0,1
	Publications in scientific journals, indexed in Scopus and Web of Science (only for SCIENCE)	0,4
	Studying at a foreign university (from the approved list) when applying for the Program	0,4

EMPLOYMENT



- Program participants choose an employer from the list and negotiate employment and working conditions.
- Program participants may change an employer, but only twice.
- Program Operator provides support with job-hunting and employment issues.

LIST OF EMPLOYERS



- More than 550 companies in the approved list:
 - Higher education institutions
 - Scientific organizations
 - Industrial companies and corporations
 - Medical and pharmacological institutions, etc.

- List is updated on a regular basis.

EMPLOYMENT MECHANISMS



Questionnaire (professional priorities)



Resume promotion at
Headhunter.ru (assistance with
creating an effective resume, mailout to
recruitment agencies, top placement)



Mailout of resume to profile
organizations



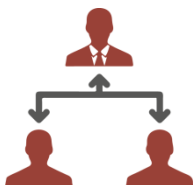
Adding resume to the database
of leading recruitment agencies



Video-resume addressing
potential employers



Assistance in the process of
adding new employers to the
approved list



Mentorship from the side of a
potential employer

PROGRAM TERMS AND CONDITIONS



Participants should:



- Provide necessary reports on time



- Upon completion of studies, return to Russia within 30 days
- Upon return to Russia, find an employer from the list of organizations within 3 months



- Work in accordance with the qualification gained for at least 3 years



* If terms and conditions of the Program are violated, the amount of grant given and financial penalties (twice the amount of the grant given) are to be paid.

PROGRAM ADVANTAGES



Free choice of best universities in 32 countries



Applications are accepted all year round



Free consultations about university admission from Program partners



Competitive amount of financial support



Possibility of co-financing from universities, companies and other programs



Guaranteed funding for the entire period of studying (no need to reapply each year)



Mentorship during the studies



Access to the pool of the best employers from the beginning of Program participation



Membership in the alumni clubs of best universities

CONTACTS



Official website: www.educationglobal.ru



globaledu@skolkovo.ru



Tel: 8(800) 50-50-623



FB www.facebook.com/educationglobal.ru



VK https://vk.com/educationglobal_ru